

VT8000 Room Controllers

VT8000 Installation Guide

Uploader Tool v3.2



Introduction

The Uploader Tool allows a user to perform the following with a VT8000 Room Controller:

- Upload/update firmware
- Upload custom image files for display when in standby mode
- Upload Lua scripts to perform custom applications
- Upload VCM firmware update (from firmware 2.0.0 and VCM 20 onward)
- Save and restore room controller settings (requires firmware 2.0.1 and onward)

The Uploader Tool is compatible with computers running the following operating systems:

- Microsoft Windows 7, 32-bit (requires Service Pack 1 and .NET framework 4.5), and 64-bit
- Microsoft Windows 8, 32-bit and 64-bit
- Microsoft Windows 10, 32-bit and 64-bit

DOWNLOAD UPLOADER TOOL AND FIRMWARE

1. Browse to <https://ecobuilding.schneider-electric.com/room-controllers> and download:

- The file 'Uploader-v3.2'
- The firmware update file for your Room Controller (xxx.FM8, where xxx is the Room Controller model number)

NOTE: By default the files are saved to the C: drive.

CONNECT TO VT8000 ROOM CONTROLLER

1. Connect Computer to VT8000 Room Controller using USB 'A' to Micro-USB 'B' cable (Figure 1).

NOTE: if using Windows 8 tablet with Intel chipset, a USB OTG adapter cable must be connected to Tablet's internal micro USB port.

2. Using the USB to micro USB cable, connect the Room Controller that will receive the uploads with Uploader Tool for VT8000.

NOTE: To ensure proper connectivity, the correct USB cable must be used. Refer to Figure 2 for the required B connector dimensions, according to the "Universal Serial Bus, Micro-USB Cables and Connectors Specification", Revision 1.01.

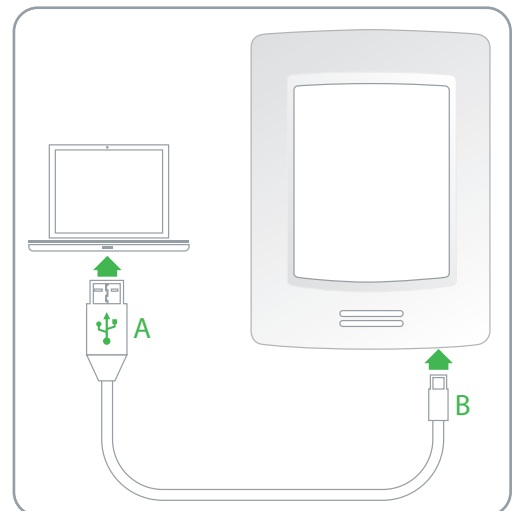


Figure 1. Connect Room Controller to system

CAUTION: Only connect one Room Controller at a time, otherwise you will have to select each one to configure individually.

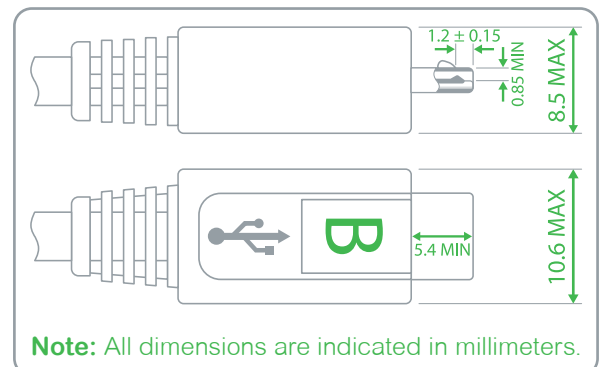


Figure 2. USB cable specification (B connector)

OPERATION

The Uploader Tool displays the following information about the Room Controller to which it is connected (Figure 3):

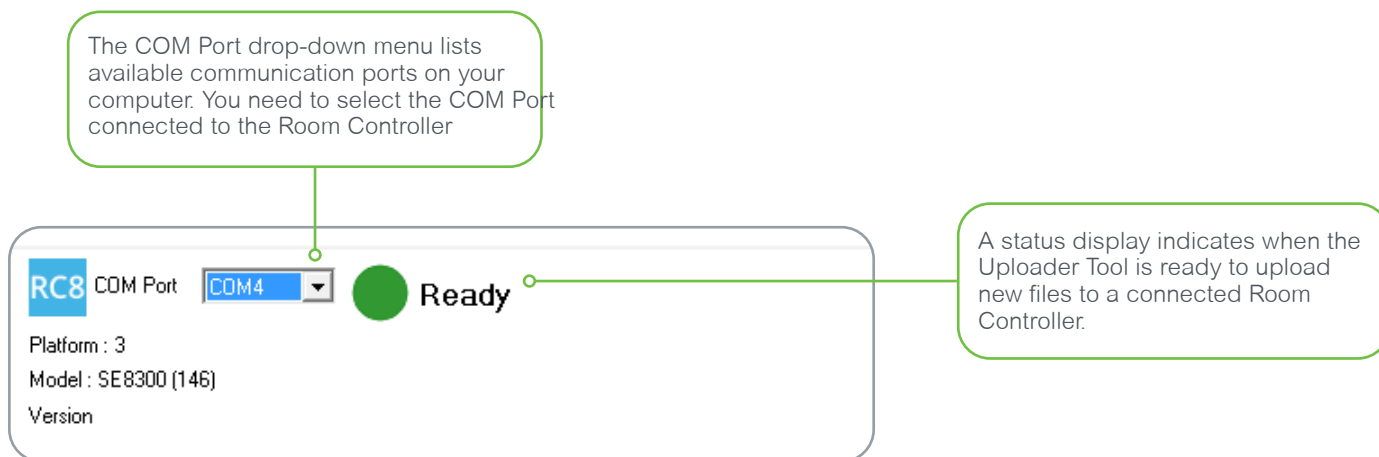


Figure 3. Uploader Tool system information

- If no Room Controller is detected, the status display shows a red dot and the message 'Not connected'.
- If a Room Controller is detected that has hardware not supported by the Uploader Tool, the status display shows a yellow dot and the message 'Not supported'.
- If a Room Controller is detected with hardware supported by the Uploader Tool, the status display shows a green dot and the message 'Ready'.

UPGRADE

1. On the Uploader Tool select the com port from the Com Port drop-down list and wait for the indicator to show 'Ready'.
2. In the Upgrade section of the Uploader Tool (Figure 4):
3. Click FM8 Path and browse to select the .FM8 file you downloaded in section DOWNLOAD UPLOADER TOOL AND FIRMWARE of this document.
4. From the Updates drop-down list select a firmware package to install on the Room Controller.

NOTE: The available upgrades are dependent on the model of the Room Controller connected.

NOTE: By default Bootloader, Firmware, Fonts, and VCM (if present) options are toggled.

NOTE: It is recommended to keep these default settings to ensure the latest packages are uploaded to the Room Controller.



Figure 4. Upgrade section

Prepare Custom Standby Image for Upload

It is possible to upload a custom standby image to display on the Room Controller when it is idle.

The image file must meet the following criteria:

- Image size: 240 horizontal x 320 vertical
- File format: 24-bit bitmap (.bmp)

Selecting an image file larger or smaller than 240 x 320 or with a colour depth less than 24 bits shows the following error message:

- Wrong file size message: "Error: Image Size is not 240 x 320 pixels."
- Wrong colour depth message: "Error: Color Depth is not 24-bit."

In the Custom Standby Image section select From File or From List (Figure 5.)

- If you selected From File, click Browse to select a file for upload.
- If you selected From List select a file from the list shown on the left pane.

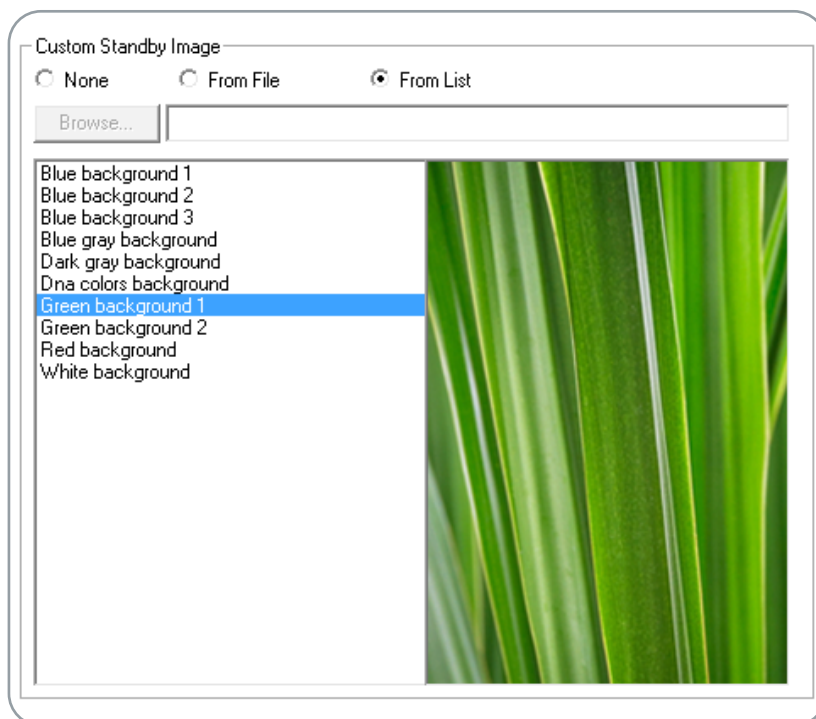


Figure 5. Custom standby image

Prepare Custom Lua Script for Upload

You can upload a custom LUA. All Lua script files must end with .lua to upload successfully.

NOTE: The Uploader Tool cannot determine if a Lua script ends with a .lua extension.

In the Custom Lua File section select From File then click Browse to select a file for upload (Figure 6.)



Figure 6. Custom Lua File

Start Upload

Ensure the connecting cable is firmly inserted in both the Room Controller and the Device running the Uploader Tool. If the Device becomes unplugged during Upload process, the Room Controller files can become corrupt and damage your device. In this condition, it may be necessary to contact Support for assistance to restore the function of the Room Controller.

1. Click Upload to upload all files to the Room Controller (Figure 7).

NOTE: The Room Controller will reboot when the upgrade is complete.

2. Disconnect the cable from the Room Controller and the Device when upload completes.

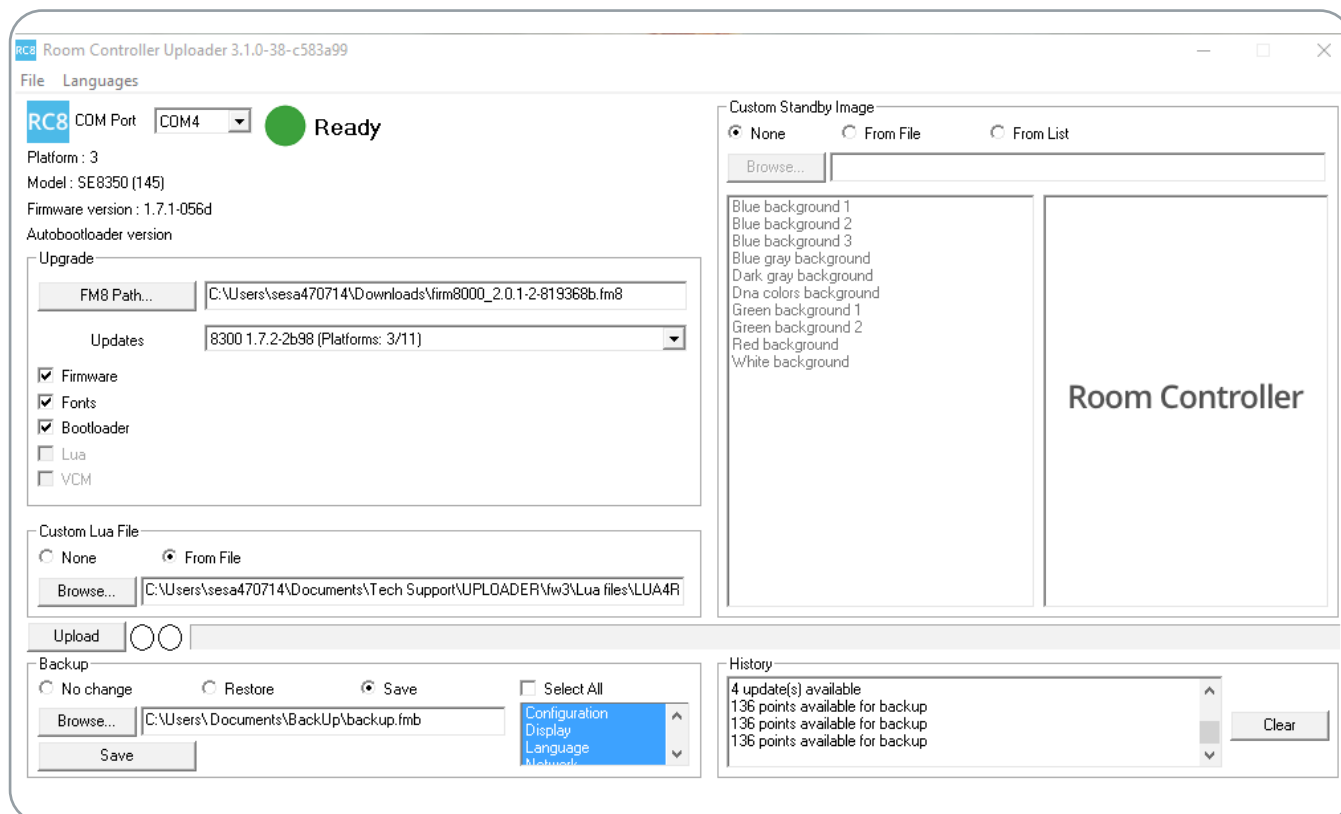


Figure 7. Upload files to the Room Controller

Backup

The Uploader now allows users to back up and restore data between room controllers. This feature helps reduce commissioning time in large scale installations by allowing the configuration of one room controller to be saved in a file and then applied to other room controllers.

You can save and restore the following categories of settings:

- ADR
- Clock/Schedule
- Configuration
- Display
- Language
- Network
- Setpoints
- Wireless

NOTE: A configuration file may only be restored to a room controller of the same model and the same or newer firmware.

NOTE: The Save and Restore features require FM8 2.0.1 or newer and firmware version 1.7 or newer.

NOTE: Configuration values specific to the installation of an individual device, such as temperature calibration and wireless networking settings, are not included in the back file.

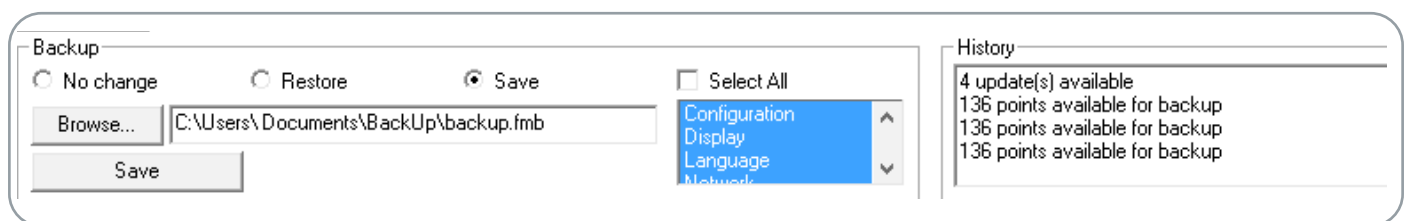


Figure 8. Backup

To Save Room Controller settings:

1. Navigate to Backup and select Save.
2. You have the option to Select All categories or manually pick the ones you wish to save.
3. In the Browse field you can select the desired directory.
4. Click Save.

To Restore a Room Controller:

1. Navigate to Backup and select Restore.
2. You can select some or all categories you would like to restore from a previously saved backup.
3. In the Browse field select the file from which you would like to restore categories.
4. Click Save.