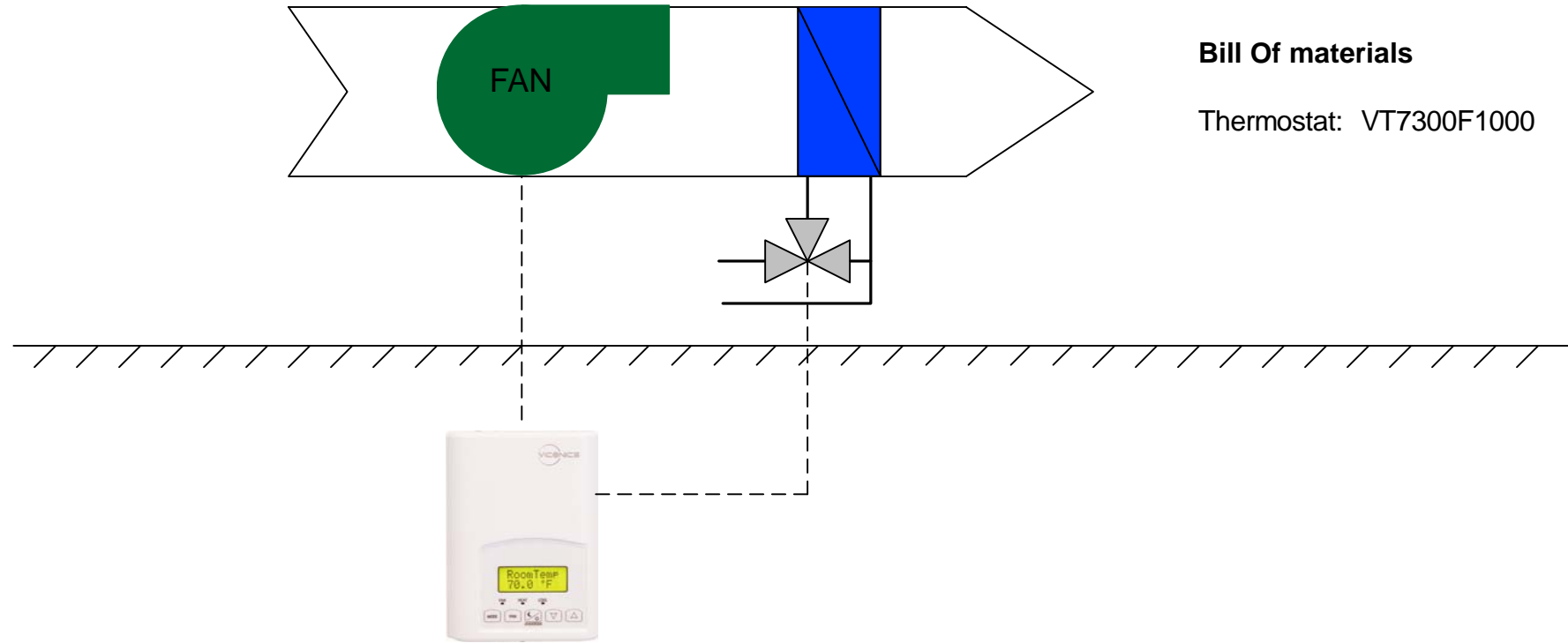




Viconics VT7300F1000 to Control a Single Speed Fan and an Analog Cooling Valve

Options:

- BACnet and Echelon models available.
- Remote wall mount or duct sensor ready.
- Tri-State Floating outputs available (*different model)
- Can be configured for 4 pipe systems.
- Binary inputs can be configured to control occupancy via door or window contact, remote night setback or to provide alarms for service or filter monitoring.
- Can be configured to two or three speed fan.



Bill Of materials

Thermostat: VT7300F1000

Sequence of Operation:

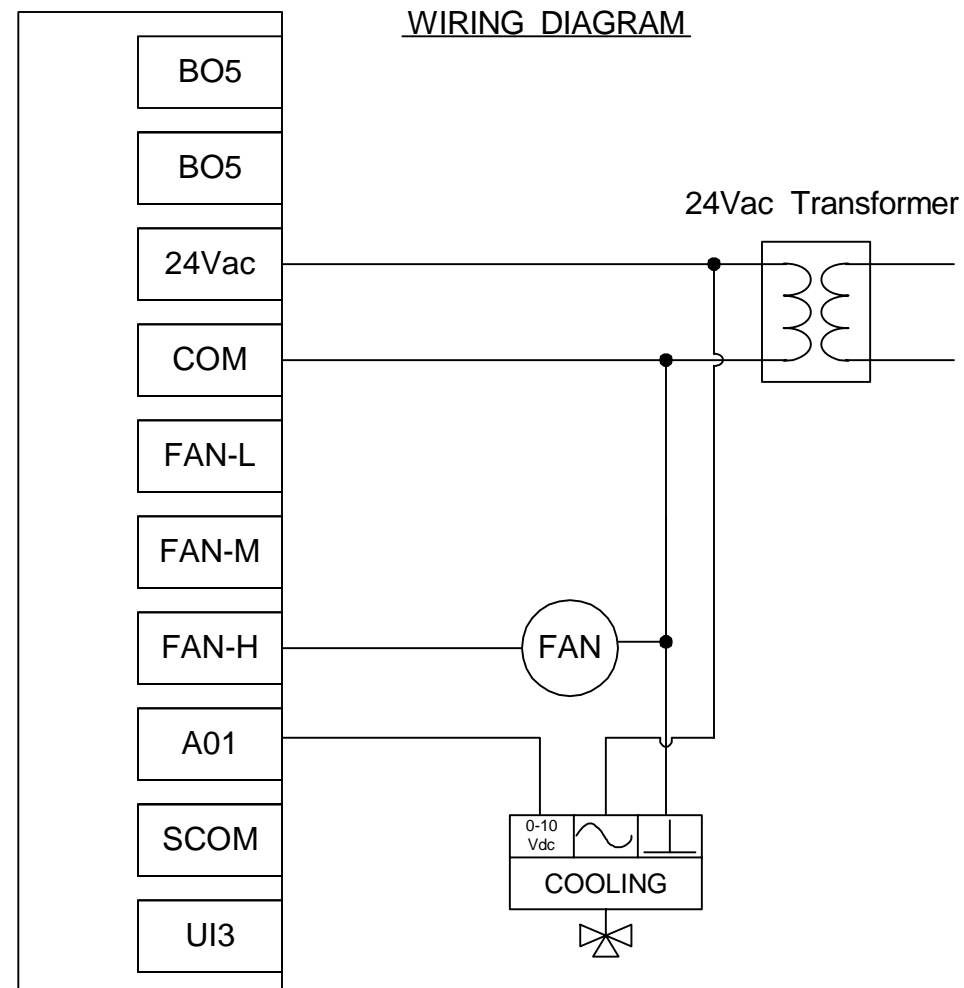
- Thermostat is in COOL mode
 - Analog valve will modulate to maintain room temperature

> To enter configuration menu press and hold center key for 8 seconds.

> For full explanation of parameters refer to Viconics manual.

PARAMETER	VALUE
Com Addr	Conditional Parameter--Only Present when connected to Network
B11	None
B12	None
UI3	COS
MenuScro	ON
AutoMode	ON
C or F	As per user. Default value = °F
Lockout	As per user. Default value = 0 No lock
Pipe No	2.0
SeqOpera	2 = Cooling Only
Fan Menu	4
Unocc HT	As per user. Default value = 62 °F (17 °C). Range = 40 to 90 °F (4.5 to 32.0 °C)
Unocc CL	As per user. Default value = 80 °F (27 °C). Range = 54 to 100 °F (12 to 37.5 °C)
heat max	As per user. Default value = 90 °F (32 °C). Range = 40 to 90 °F (4.5 to 32.0 °C)
cool min	As per user. Default value = 54 °F (12 °C). Range = 54 to 100 °F (12 to 37.5 °C)
Set Type	Permanent
TOccTime	As per user. Default value 2 hours. Range = 0 to 24 hours
DoorTime	N/A
deadband	As per user. Default value 2.0 °F (1.0 °C). Range = 2, 3, 4 or 5 °F, 1.0 °F increments (1.0 to 2.5 °C, 0.5 °C increments)
cal RS	0 °F or °C
cal RH	0 °F or °C
aux cont	0
FL time	N/A
cph	N/A
RA/DA	As per Valve
Reheat	0 for ON/OFF (4CPH), 1 for PWM (10 second) only if using SSR

WIRING DIAGRAM



Application: VT7300F1000
2 Pipe Hydronic Cooling

Controlling: 2 Pipe Cooling Coil via Analog Valve

Drawing By: Jimmy El-Hajj
Viconics Electronics Inc.