



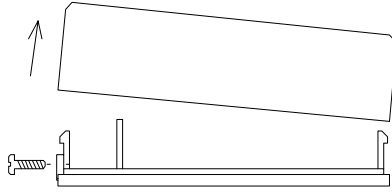
T100 T150

THERMOSTAT WITH:

- 1 OUTPUT
- DAY-NIGHT MODE (T150 ONLY)

TO OPEN THERMOSTAT COVER

- Remove security screw on left side of thermostat cover.
- Open up by pulling on the left side of thermostat.



THERMOSTAT INSTALLATION

A) Location:

- 1- Shouldn't be installed on outside wall.
- 2- Must be installed away from any heat source.
- 3- Shouldn't be affected by direct sun radiation.
- 4- Nothing must restrain vertical air circulation to the thermostat.

B) Installation:

- 1- Pull out cables 6" out of the wall.
- 2- Wall surface must be flat and clean.
- 3- Separate the thermostat and the base by pulling cover on the left side (same as the security screw.)
- 4- Insert cable in the central hole of the base.
- 5- Align the base and mark the location of the two mounting holes on the wall.
- 6- Install shields in the wall.
- 7- Insert screws in mounting holes on each side of the base.
DO NOT OVERTIGHTEN!
- 8- Open the cable protection 1 1/4 inch more or less.
- 9- Strip each wire 1/4 inch.
- 10- Insert each wire according to wiring diagram.
- 11- Reinstall the cover (right side first).
- 12- Install security screw.

SETPOINT ADJUSTMENT KNOB LIMITATION

Note: To limit the rotation of setpoint knob, adjust setpoint to desired value, then insert stoppers in appropriate holes.

Horizontal model:

S1,S10 = No limitation
S3 à S8 = Setpoint limitations

Vertical model:

S7,S10 = No limitation
S1 to S7, or S12: Setpoint limitations

REMOTE SENSOR

It is possible to use a remote sensor (for duct or room application) by connecting it to pins no. 6 and 7. Inside sensor must be disconnected by removing jumper J4 inside the thermostat.

Characteristics of remote sensor 47 KΩ.

180.0 °F	82.2 °C	5.494 Kohm	0.553 Volts
170.0 °F	76.7 °C	6.585 Kohm	0.648 Volts
160.0 °F	71.1 °C	7.933 Kohm	0.761 Volts
150.0 °F	65.6 °C	9.610 Kohm	0.893 Volts
140.0 °F	60.0 °C	11.700 Kohm	1.047 Volts
130.0 °F	54.4 °C	14.342 Kohm	1.225 Volts
120.0 °F	48.9 °C	17.682 Kohm	1.429 Volts
110.0 °F	43.3 °C	21.940 Kohm	1.659 Volts
100.0 °F	37.8 °C	27.412 Kohm	1.914 Volts
90.0 °F	32.2 °C	34.483 Kohm	2.191 Volts
80.0 °F	26.7 °C	43.704 Kohm	2.486 Volts
70.0 °F	21.1 °C	55.834 Kohm	2.791 Volts
60.0 °F	15.6 °C	71.866 Kohm	3.096 Volts
50.0 °F	10.0 °C	93.340 Kohm	3.393 Volts
40.0 °F	4.4 °C	122.298 Kohm	3.673 Volts
30.0 °F	-1.1 °C	161.670 Kohm	3.927 Volts
20.0 °F	-6.7 °C	215.805 Kohm	4.150 Volts
10.0 °F	-12.2 °C	291.100 Kohm	4.341 Volts
0.0 °F	-17.8 °C	396.830 Kohm	4.499 Volts

DAY-NIGHT MODE

An external contact closing between terminals 6 and 8 activates night mode. A LED on the thermostat flashes continuously indicating night mode. By pressing the button on the thermostat, day mode is reactivated. The thermostat returns to night mode when pressing again the button, or automatically after a 4 hours delay.

Note: Terminals 6 and 8 can be connected together between thermostats.

SPECIFICATIONS

Operating Conditions: 0 °C to 50 °C (32 °F to 122 °F)
0% to 95% R.H. non-condensing

Sensor: Local 47 K NTC thermistor

Resolution: ± 0.1 °C (± 0.2 °F)

Control accuracy: ± 0.2 °C (± 0.4 °F) for low ranges
(calibrated) ± 0.9 °C (± 1.8 °F) for high ranges

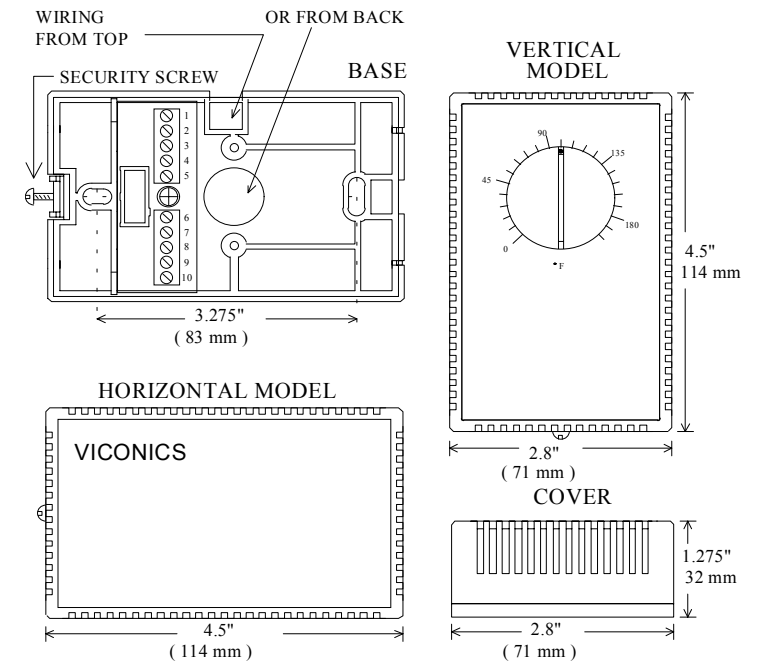
Ranges: 10 °C to 32 °C (50 °F to 90 °F)
-18 °C to 82 °C (0 °F to 180 °F)

Outputs: Isolated Triac: 30 Vac at ½ A max.
0 to 10 Vdc into 2KΩ resistance min.
0 / 5 Vdc at 20 mA max. for both outputs.

Power: 24 Vac -15%, +10% 50/60 Hz; 2 VA

Specifications and equipment are subject to change without prior notice.

DIMENSIONS



ORDER CODE _____

T100 - AB - CD - EF (without day-night mode)

T150 - AB - CD - EF (with day-night mode)

A	Output no. 1 (controlled device)	Type
1	Relay, thermal relay, two position motor	Isolated Triac
2	Normally open thermal valve	Isolated Triac
3	Normally close thermal valve	Isolated Triac
4	"SSR" with 24 Vac input	Isolated Triac
5	"SSR" with 3-32 Vdc input	Pulsed 0/5 Vdc
6	0 to 10 Vdc actuator, voltage relay or "SCR"	0 to 10 Vdc

B	Output no. 2
0	Non available

C	Output control mode	
1	Heating, reverse acting, (RA)	* Standard
2	Cooling, direct acting, (DA)	

D	Main control sensor location	
1	Room, inside thermostat, or (duct return air**)	* Standard
2	Duct supply air**	

** Order with: S60 or S70 sensor

E	Setpoint adjustment	
1	User adjustable	* Standard
2	Blind cover	

F	Scale	
1	10 °C to 32 °C	* Standard
2	50 °F to 90 °F	
3	-18 °C to 82 °C	Δ
4	0 °F to 180 °F	Δ

Example: T150 - 50 - 31 - 12
 One "SSR" 3-32 Volts heating output
 and one normally close thermal valve cooling output.
 Main sensor located inside the room
 Adjustable setpoint. Scale 50 °F to 90 °F.

Δ Note: These models have a vertical cover.

Note: Order remote sensors separately

WIRING _____

NOTE: WITH THE PROPER CODES, TERMINALS 5, 6 AND 8 CAN BE WIRED TOGETHER BETWEEN EACH THERMOSTAT IF POLARITY IS RESPECTED

**Power supply 24 Vac -15% +10%
50/60 HZ 2 VA**

POWER SUPPLY 24 Vac.

24 VAC [5] --- 24VAC
 COMMON [6] ---

IMPORTANT: IF USING A COMMON TRANSFORMER RESPECT POLARITY (COMMON AND 24 VAC) BETWEEN EACH THERMOSTAT

Day night mode T150 only

DAY NIGHT MODE

INPUT [8] --- COMMON --- CLOSE = 1 CONTACT USED FOR ALL THERMOSTAT USING THE SAME TRANSFORMER
 DAY / NIGHT [6] --- COMMON --- NIGHT SET BACK

Output #1 code A= 1, 2, 3 & 4 Triacs

OUTPUT #1 USING RELAY WITH ISOLATED TRANSFORMER

OUTPUT [3] --- RELAY OR THERMAL VALVE 24 VAC
 CONTACT [4] --- RELAY OR THERMAL VALVE 24 VAC
 24VAC --- RELAY OR THERMAL VALVE 24 VAC
 R --- RELAY OR THERMAL VALVE 24 VAC

Output #1 code A= 1, 2, 3 & 4 Triacs

OUTPUT #1 USING SAME TRANSFORMER TO OUTPUT

OUTPUT [3] --- RELAY OR THERMAL VALVE 24 VAC
 CONTACT [4] --- RELAY OR THERMAL VALVE 24 VAC
 24 VAC [5] --- 24VAC
 COMMON [6] --- 24VAC

Output #1 code A= 5 Pulsed 0/5 Vdc

OUTPUT #1 USING PULSED 0/5 Vdc

SOLID STATE RELAY

0/5 V + [4] --- SOLID STATE RELAY
 COMMON [6] --- SOLID STATE RELAY
 3-32 VDC TRIGGER --- SOLID STATE RELAY
 LOAD --- SOLID STATE RELAY

Output #1 code A= 6 Analog 0 to 10 Vdc

OUTPUT #1 USING 0 TO 10 Vdc

0 TO 10 Vdc + [4] --- ELECTRONIC ACTUATOR, SCR, OR VOLTAGE RELAY
 COMMON [6] ---

**Remote main temperature control sensor
Room or return control code D= 1,
Supply control code D=2**

REMOTE MAIN CONTROL SENSOR

COMMON [6] --- VICONICS
 EXTERNAL SENSOR [7] --- VICONICS
 DUCT S60 OR S70 --- VICONICS
 IMMERSION S90 --- VICONICS
 ROOM S80 --- VICONICS

NOTE: REMOVE INTERNAL J4 JUMPER