

Uploader Tool

Firmware Upgrade for SE8000 Series Room Controllers



Introduction

The Uploader Tool allows a user to perform the following with a SE8000-Series Room Controller:

- Upload/update firmware
- Upload custom image files for display when in standby mode
- Upload Lua scripts to perform custom applications
- Upload VCM firmware update (from firmware 2.0.0 and VCM 20 onward)
- Save and restore room controller settings (requires firmware 2.0.1 or newer)

The Uploader Tool is compatible with computers running the following operating systems:

- Microsoft Windows 7, 32-bit (requires Service Pack 1 and .NET framework 4.5), and 64-bit
- Microsoft Windows 8, 32-bit and 64-bit
- Microsoft Windows 10, 32-bit and 64-bit

DOWNLOAD UPLOADER TOOL AND FIRMWARE

1. Browse to <https://ecobuilding.schneider-electric.com/room-controllers> and download:

- The file 'Uploader-v3.1'
- The firmware update file for your Room Controller (xxx.FM8, where xxx is the Room Controller model number)

NOTE: By default the files are saved to the C: drive.

CONNECT TO SE8000 ROOM CONTROLLER

1. Connect Computer to SE8000 Series Room Controller using USB 'A' to Micro-USB 'B' cable (Figure 1).

NOTE: if using Windows 8 tablet with Intel chipset, a USB OTG adapter cable must be connected to Tablet's internal micro USB port.

2. Using the USB to micro USB cable, connect the Room Controller that will receive the uploads with Uploader Tool for SE8000.

CAUTION: only connect one Room Controller at a time. Multiple connected Room Controllers can cause errors and upload failures.

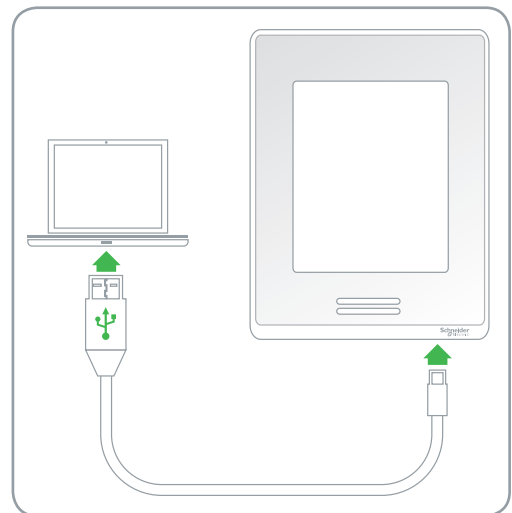


Figure 1 Connect Room Controller to system

OPERATION

The Uploader Tool displays the following information about the Room Controller to which it is connected (Figure 2):

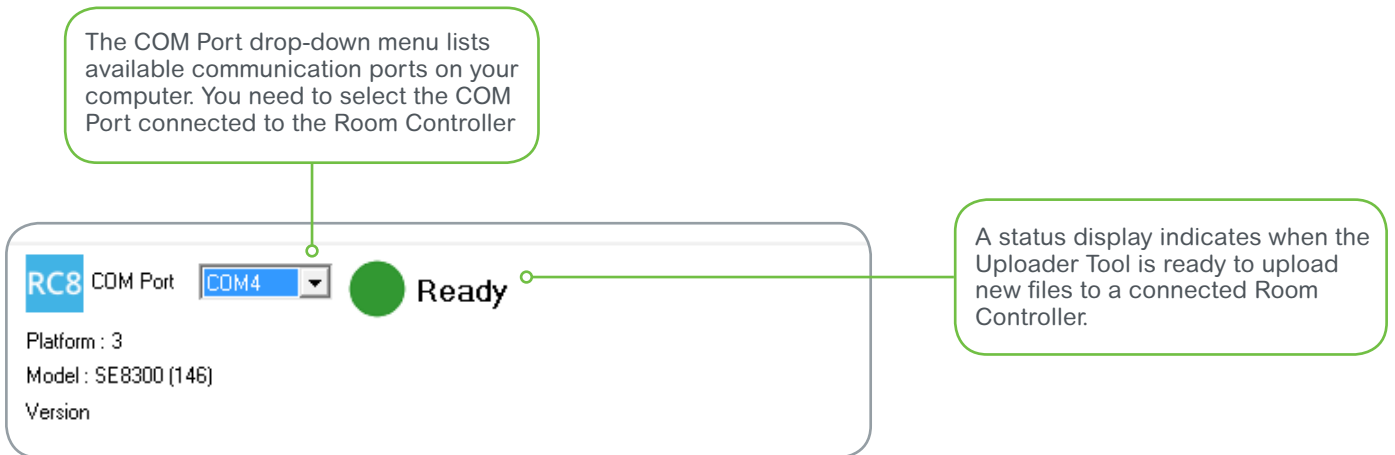


Figure 2 Uploader Tool system information

- If no Room Controller is detected, the status display shows a red dot and the message 'Not connected'.
- If a Room Controller is detected that has hardware not supported by the Uploader Tool, the status display shows a yellow dot and the message 'Not supported'.
- If a Room Controller is detected with hardware supported by the Uploader Tool, the status display shows a green dot and the message 'Ready'.

UPGRADE

1. On the Uploader Tool select the com port from the Com Port drop-down list and wait for the indicator to show 'Ready'.
2. In the Upgrade section of the Uploader Tool (Figure 3):
3. Click FM8 Path and browse to select the .FM8 file you downloaded in section DOWNLOAD UPLOADER TOOL AND FIRMWARE of this document.
4. From the Updates drop-down list select a firmware package to install on the Room Controller.

NOTE: The available upgrades are dependent on the model of the Room Controller connected.

NOTE: By default Bootloader, Firmware, Fonts, and VCM (if present) options are toggled.

NOTE: It is recommended to keep these default settings to ensure the latest packages are uploaded to the Room Controller.



Figure 3 Upgrade section

Prepare Custom Standby Image for Upload

It is possible to upload a custom standby image to display on the Room Controller when it is idle.

The image file must meet the following criteria:

- Image size: 240 horizontal x 320 vertical
- File format: 24-bit bitmap (.bmp)

Selecting an image file larger or smaller than 240 x 320 or with a colour depth less than 24 bits shows the following error message:

- Wrong file size message: "Error: Image Size is not 240 x 320 pixels."
- Wrong colour depth message: "Error: Color Depth is not 24-bit."

In the Custom Standby Image section select From File or From List (Figure 4.)

- If you selected From File, click Browse to select a file for upload.
- If you selected From List select a file from the list shown on the left pane.

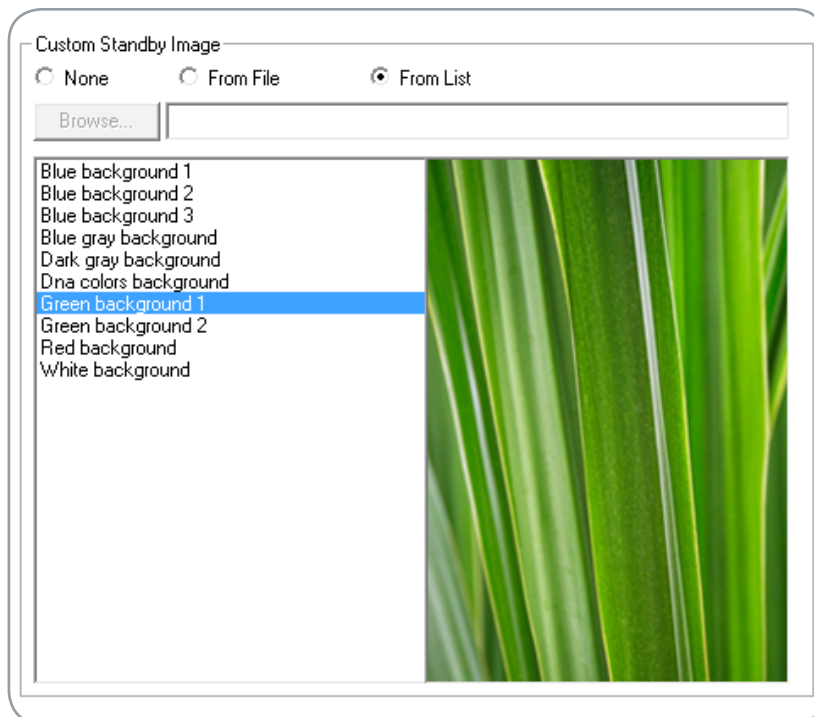


Figure 4 Custom standby image

Prepare Custom Lua Script for Upload

You can upload a custom LUA. All Lua script files must end with .lua to upload successfully.

NOTE: The Uploader Tool cannot determine if a Lua script ends with a .lua extension.

In the Custom Lua File section select From File then click Browse to select a file for upload (Figure 5.)



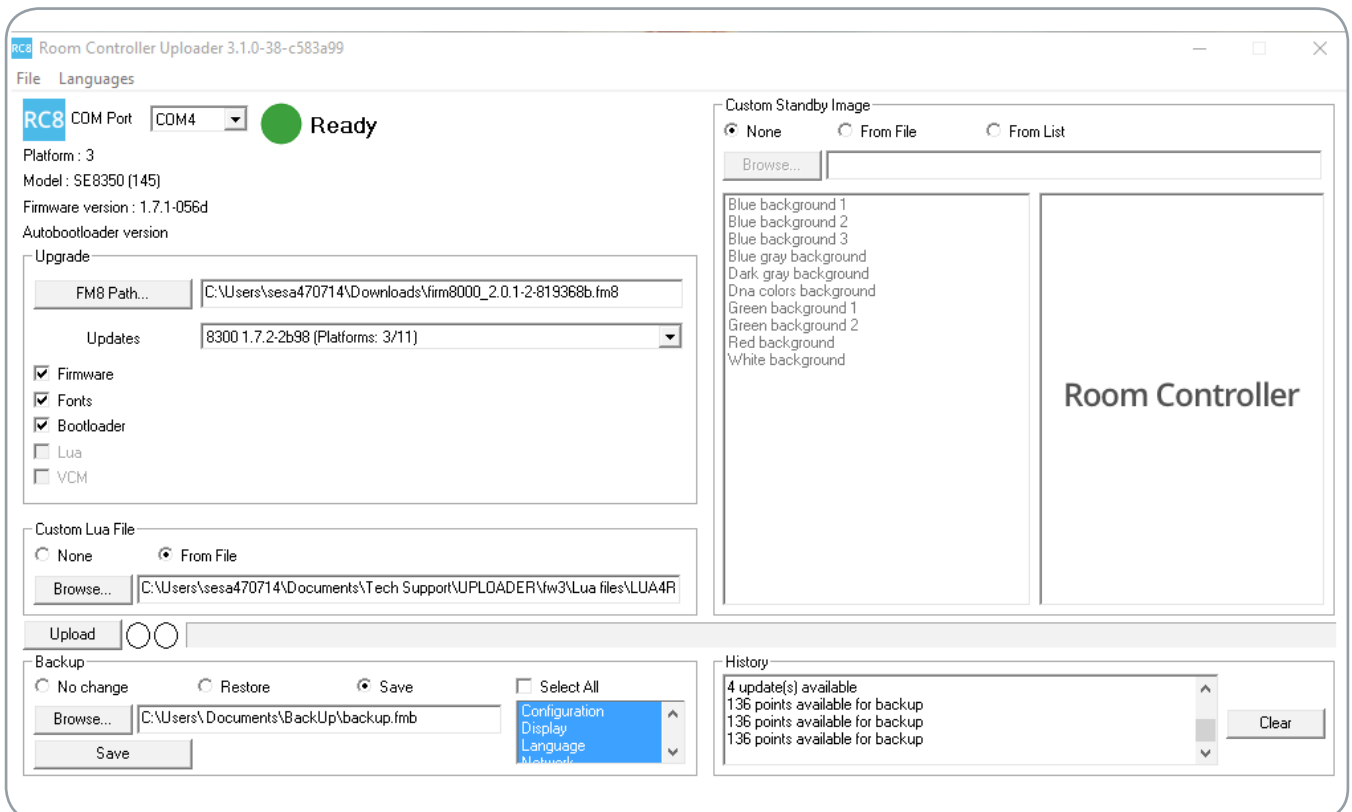
Start Upload

Ensure the connecting cable is firmly inserted in both the Room Controller and the Device running the Uploader Tool. If the Device becomes unplugged during Upload process, the Room Controller files can become corrupt and damage your device. In this condition, it may be necessary to contact Support for assistance to restore the function of the Room Controller.

1. Click Upload to upload all files to the Room Controller (Figure 6).

NOTE: The Room Controller will reboot when the upgrade is complete.

2. Disconnect the cable from the Room Controller and the Device when upload completes.



Backup

The Uploader now allows users to back up and restore data between room controllers. This feature helps reduce commissioning time in large scale installations by allowing the configuration of one room controller to be saved in a file and then applied to other room controllers.

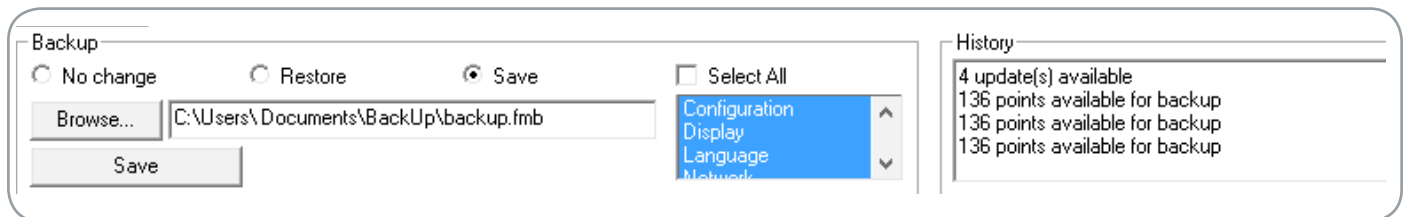
You can save and restore the following categories of settings:

- ADR
- Clock/Schedule
- Configuration
- Display
- Language
- Network
- Setpoints
- Wireless

NOTE: A configuration file may only be restored to a room controller of the same model and the same or newer firmware.

NOTE: The Save and Restore features require FM8 2.0.1 or newer and firmware version 1.7 or newer.

NOTE: Configuration values specific to the installation of an individual device, such as temperature calibration and wireless networking settings, are not included in the back file.



To Save Room Controller settings:

1. Navigate to Backup and select Save.
2. You have the option to Select All categories or manually pick the ones you wish to save.
3. In the Browse field you can select the desired directory.
4. Click Save.

To Restore a Room Controller:

1. Navigate to Backup and select Restore.
2. You can select some or all categories you would like to restore from a previously saved backup.
3. In the Browse field select the file from which you would like to restore categories.
4. Click Save.

Technical Support



For any issues with SmartStruxure Solution or SmartStruxure Lite, contact Schneider Electric Technical Support according to your region.

North America (NAM) Product Support

Building Management Systems (BMS): productsupport.NAM-BMS@schneider-electric.com

Field Devices: productsupport.NAM-HVAC@schneider-electric.com

Global Product Support

Building Management Systems (BMS): productsupport.BMS@schneider-electric.com

Field Devices: productsupport.HVAC@schneider-electric.com

<https://ecobuilding.schneider-electric.com/support>

About Schneider Electric

Schneider Electric is leading the Digital Transformation of Energy Management and Automation in Homes, Buildings, Data Centers, Infrastructure and Industries.

With global presence in over 100 countries, Schneider is the undisputable leader in Power Management – Medium Voltage, Low Voltage and Secure Power, and in Automation Systems. We provide integrated efficiency solutions, combining energy, automation and software.

In our global Ecosystem, we collaborate with the largest Partner, Integrator and Developer Community on our Open Platform to deliver real-time control and operational efficiency.

We believe that great people and partners make Schneider a great company and that our commitment to Innovation, Diversity and Sustainability ensures that Life Is On everywhere, for everyone and at every moment.

www.schneider-electric.com