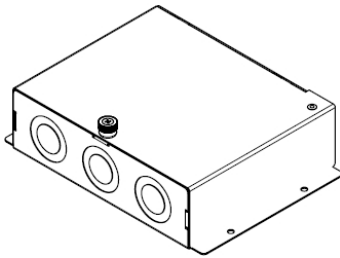




Fan Control Center with 24 VAC Transformer Installation Manual




Features:

- LED indication of relay status.
- 115 VAC or 230 VAC fused and 24 VAC thermal fuse.
- Captive screw for enclosure cover.

VC1300E5000
VC2300E5000

Technical Data

Contact Converter Series Models

	Certified to ETL	VC1300E5000	VC2300E5000
		Number of Outputs	3 on/off outputs
Input Power Supply	110 to 120 VAC 1 phase 50/60 Hz	220 to 240 VAC 1 phase 50/60 Hz	
Contacts Ratings	Resistive: 7 A / 1680 W; Motor and or compressor: ¼ Hp / 10 LRA / 2.5 FLA		
	Approved for 30,000 operations at 240 VAC		
24 VAC Output Voltage Power Rating	0.5 A, 12 VA max		
24 VAC Output Voltage Load Regulation Rating	Min: 20.5 VAC (Conditions: Full load with 110/220 VAC, VC1300/VC2300) Max: 29.5 VAC (Conditions: No load with 120/240 VAC, VC1300/VC2300)		
	Load regulation is non-inherently limited.		
Electrical Connection	0.8 mm ² [18 AWG] minimum		
Operating Temperature	0° C to 50° C [32° F to 122° F]		
Storage & Transport Temperature	-30° C to 50° C [-22° F to 122° F]		
Relative Humidity	5 to 95 % non condensing		
Weight	400 g [0.9 lb]		



Risk of electric shock. Disconnect power supply before connection and/or servicing.



Installation must be done by a skilled and qualified technician.

Observe local regulations concerning provision of electrical installation in electrical compartment.

⚠ WARNING

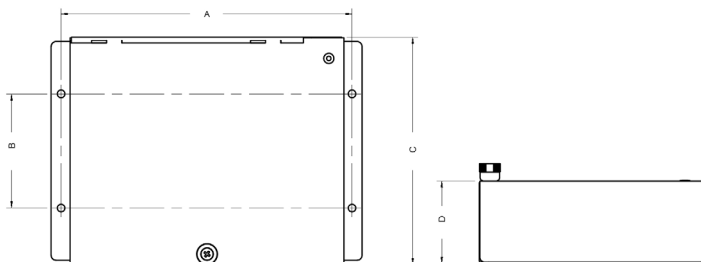
CALIFORNIA PROPOSITION 65

This product can expose you to chemicals including Lead and Lead compounds, which is known to the State of California to cause cancer and birth defects or other reproductive harm. For more information, go to www.P65Warnings.ca.gov.

Failure to follow these instructions can result in birth defects or other reproductive harm.

Dimensions

VCX300E5000 Series

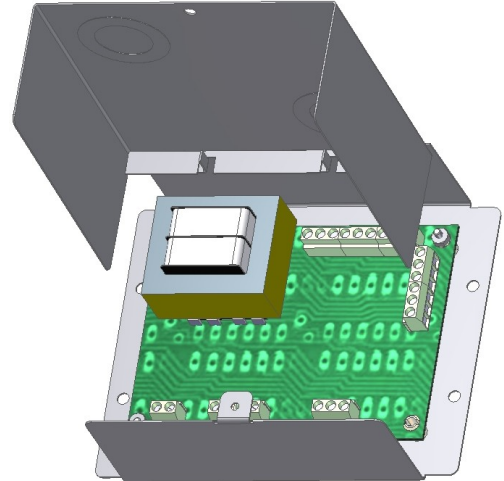
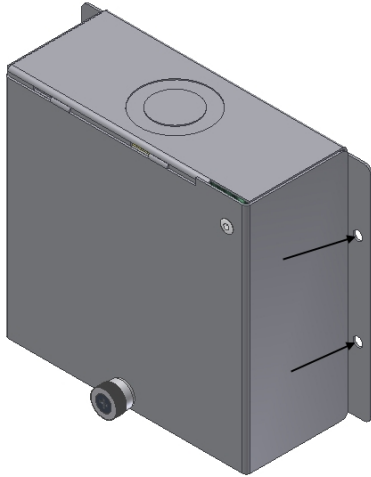


Dimension	Imperial (in)	Metric (mm)
A	7 3/16	182.56
B	2 13/16	71.44
C	5 19/32	142.08
D	2 1/32	51.59
Holes Dia.	3/16	4.77



Class 2

Mechanical Installation



Contact converter can be attached directly on wall or ventilation duct with self tapping screws (not included).

Hinged cover of contact converter with enclosure is maintained with 1 screw located on top.

Electrical Installation

Terminal Description

Terminals TB1 (Power Supply)
1- Neutral
2- Line

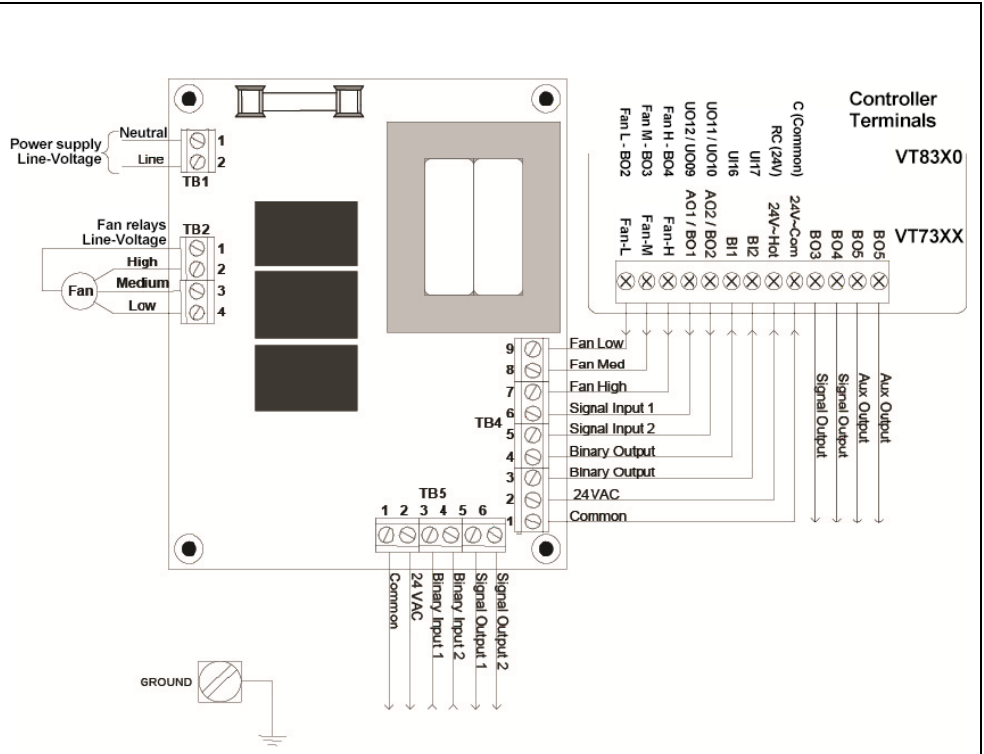
Terminals TB2 (Fan - Line Voltage)
1- Neutral
2- Fan Speed High
3- Fan Speed Med
4- Fan Speed Low

Terminals TB3 (Other Contact - Line Voltage)
1- Neutral
2- Line voltage Output 1
3- Line voltage Output 2

Terminals TB4 (From Controller)
1- Common
2- 24 VAC Output
3- Binary Output 1
4- Binary Output 2
5- Valve Signal Input 1
6- Valve Signal Input 2
7- Fan Speed High
8- Fan Speed Med
9- Fan Speed Low

Terminals TB5 (Input / Output)
1- Common
2- 24 VAC Output
3- Binary Input 1
4- Binary Input 2
5- Valve Signal Output 1
6- Valve Signal Output 2

Typical Applications



THE CONTACT CONVERTER MUST BE CONNECTED TO EARTH WITH THE AID OF THE GROUND LUG LOCATED ON THE METAL BASE

Recycling at end of life



Please check with your local government for instructions on disposal of this product.

www.viconics.com